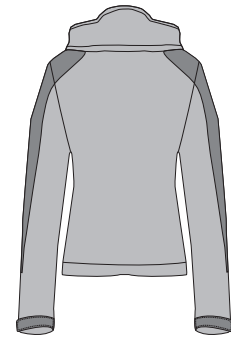


# Ladies Endeavor Jacket

PORT | AUTHORITY®



Front



Back

L768

\* 100% polyester twill with PU coating \* Mesh upper body lining, with nylon lower body and sleeve lining \* Gently contoured silhouette \* Two-way zipper with ergonomic pull \* Inside chest pocket \* Two side pockets \* Velcro adjustable tab cuffs \* Bottom hem toggle adjustment \* Port Pocket™ for easy embroidery access

**Care Instructions:**  
Machine wash warm. Wash inside out with like colors. Line dry. Do not bleach. Do not iron. Do not dry clean.

## Finished Measurements in Inches

| Size   | XS   | S    | M    | L  | XL   | XXL  | Plus 1X | Plus 2X |
|--------|------|------|------|----|------|------|---------|---------|
| Width  | 18.5 | 19.5 | 20.5 | 22 | 23.5 | 25   | 26.5    | 29      |
| Length | 23   | 24   | 25   | 26 | 27   | 27.5 | 28      | 29      |
| Sleeve | 31   | 32   | 33   | 34 | 34.5 | 35.5 | 36      | 36      |

## Colors

|  |                    |
|--|--------------------|
|  | Insignia Blue/Navy |
|  | Black/Black        |
|  | Beach/Sand Dune    |
|  | Black/Gunmetal     |

Width measured 1" below armhole. Length measured from center back neck seam to bottom hem. Sleeve measured from center back neck seam to cuff.

**Please Note:**  
Colors shown are approximate and for reference only. For closest match see PMS colors, or for exact match, returnable samples and grommeted samples are available.

## Color Chart

| Jacket Colors | Insignia Blue | Black           | Beach    | Gunmetal |
|---------------|---------------|-----------------|----------|----------|
| Textile PMS   | No Match      | No Match        | No Match | No Match |
| General PMS   | 7545 C        | Process Black C | 453 C    | No Match |